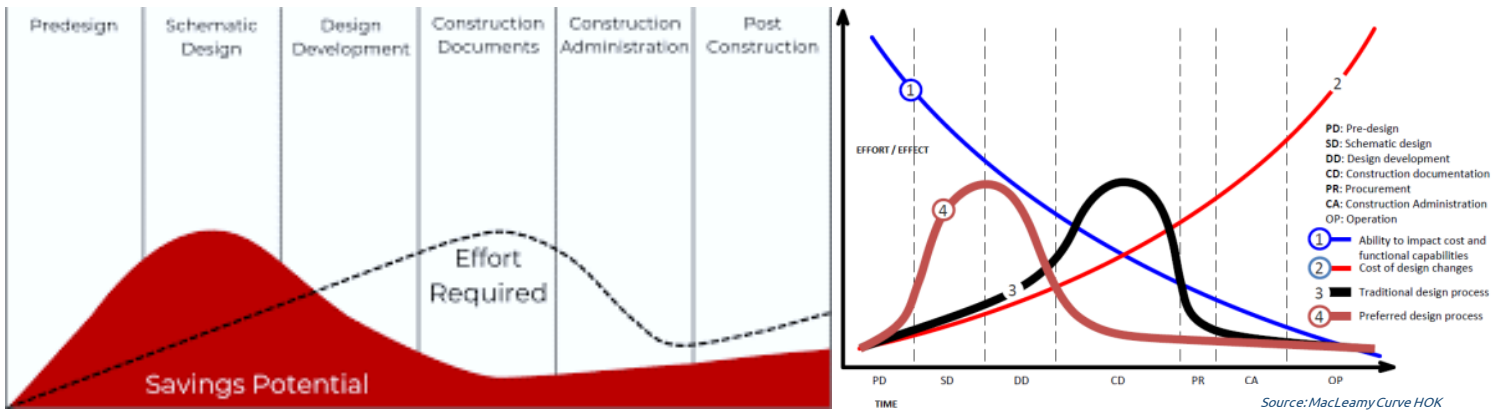


Description

The demand for high performance buildings is increasing. In order to assess the performance of these buildings it is important to carry out whole building energy modeling. It can provide value to the project teams as it simulates and evaluates the potential energy performance. This further helps to take better informed decisions, compliance certification for local energy codes and easily meet the building certification requirements. At an early stage different components and systems can be compared and identify the ones that help to optimize energy efficiency and meet the performance target.



BENEFITS



LESSER
Time and Effort



HIGHER
Savings Potential



EASILY
Achieve
Certification Goals



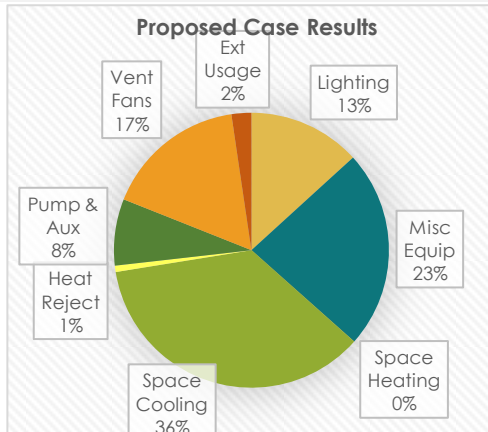
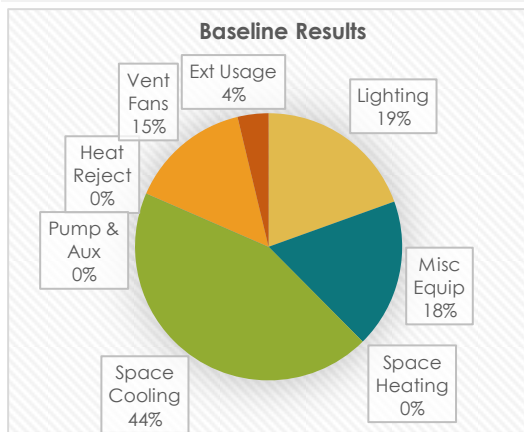
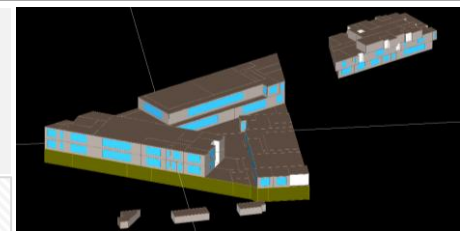
HIGHEST
Potential Impact
can be identified



IDENTIFY
Building performance
relationships

CASE STUDY

Energy Modeling for a Bank Office Building located in Composite climate was carried out using eQUEST software. The building is catered through a Centralized Air conditioning system, VRF system and Split AC system.



27% Savings (499210 kWh)
Over the Baseline With Solar PV (60kWp)

11 Points
Under Energy Efficiency Credit 2 (IGBC NB)

6 Points
Under On site Renewable Energy Efficiency Credit 3 (IGBC NB)

References

- <https://www.usgbc.org/articles/benefits-earlystage-energy-modeling-usgbc-colorado>
- <https://www.facilitiesnet.com/energyefficiency/article/Understanding-What-an-Energy-Model-Can-and-Cant-do-is-Critical-to-its-Success--12493?source=previous>